

1

2

3

4

5

6

A

B

C

D

A

B

C

D

5/8-11 THREAD x 1-1/8 DEEP
C'BORE Ø.642 x .300 DEEP

PRECISION GROUND
FOR DUAL CONTACT FIT

Ø2.50

Ø1.76

Ø1.56

Ø1.75

7/24 TAPER

2.69

0

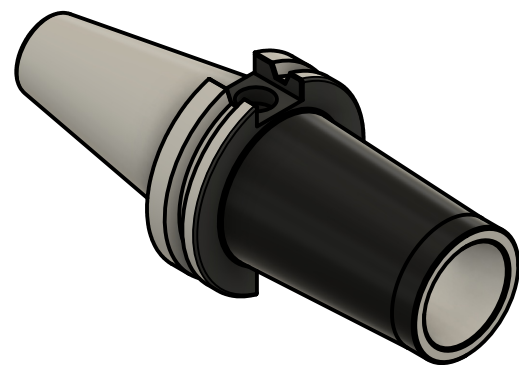
.04

.75

3.18

3.5

DSF16 DUAL CONTACT TAPER



NOTES:

WORKS ON ALL CAT40 MACHINES WITH DUAL CONTACT SPINDLES
COMPATIBLE WITH BIG-PLUS® SPINDLES
ACCEPTS ALL DSF16 MODULAR TOOL HOLDERS
FOR MORE PRODUCT DETAILS PLEASE GO TO MARITOO.COM
AND SEARCH ITEM # LISTED ON THIS PRINT

MARITOO

www.maritool.com

ITEM# **CAT40 DSF16-3.5D**

Made In USA / Drawn By FM

1

2

3

4

5

6