

1

2

3

4

5

6

A

A

B

B

C

C

D

D

PRECISION GROUND
FOR DUAL CONTACT FIT

Ø2.50

5/8-11 THREAD x 1-1/8 DEEP
C'BORE Ø.642 x .300 DEEP

1.28

Ø1.75

Ø.500
TIP Ø.88

Ø1.30

7/24 TAPER

2.69

0

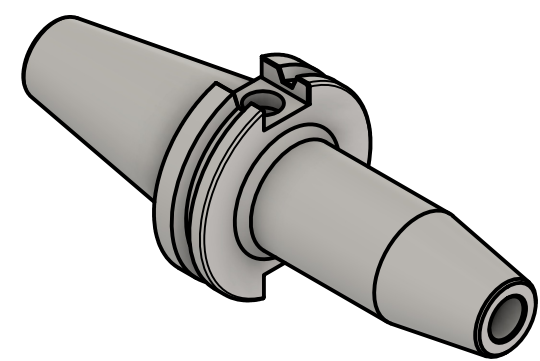
.04

.75

.87

2.69

4.0



NOTES:
WORKS ON ALL CAT40 MACHINES WITH DUAL CONTACT SPINDLES
COMPATIBLE WITH BIG-PLUS® SPINDLES
ACCEPTS 0.500 SHANK TOOLING
FOR MORE PRODUCT DETAILS PLEASE GO TO MARITool.COM
AND SEARCH ITEM # LISTED ON THIS PRINT

MARITool

www.maritool.com

ITEM# **CAT40-SF.500-4.0D**

Made In USA / Drawn By FM

1

2

3

4

5

6